

Managing 'What Technology Where' Through Higher Level Constructive Alignment

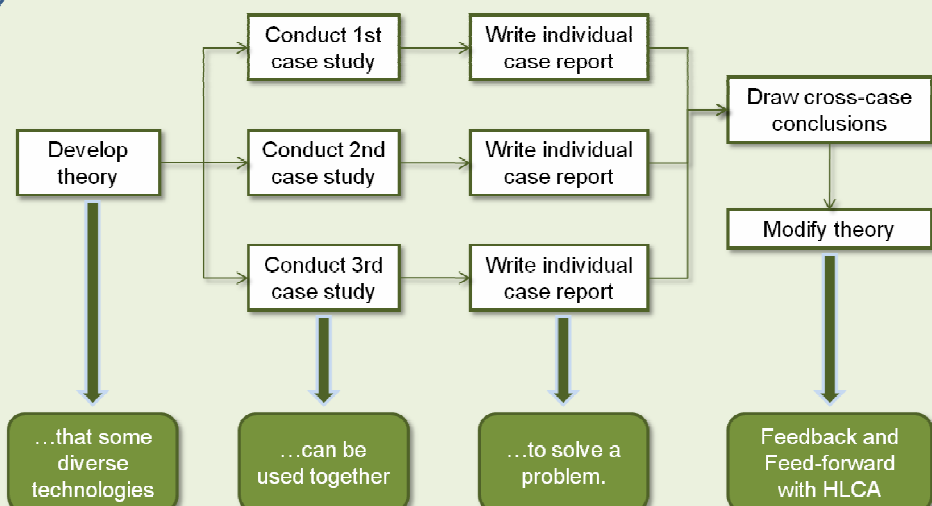
Simon Andrews & Simon Polovina (ACES)



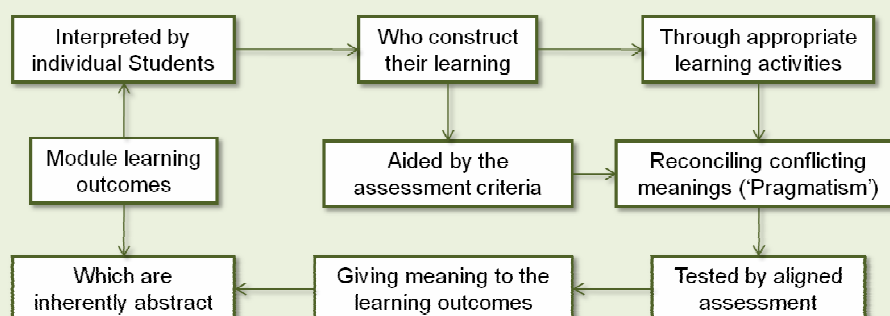
The aim is to appropriate Yin and HLCA...

...to align the guided study of diverse technologies...

After Yin's (2003) case study method

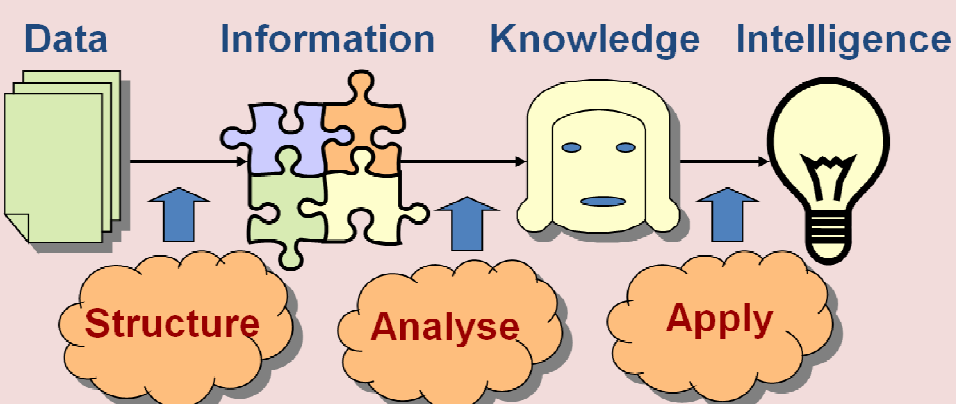


Higher level constructive alignment (HLCA) - after Biggs (1999) and Peirce (Sheriff, 2006)

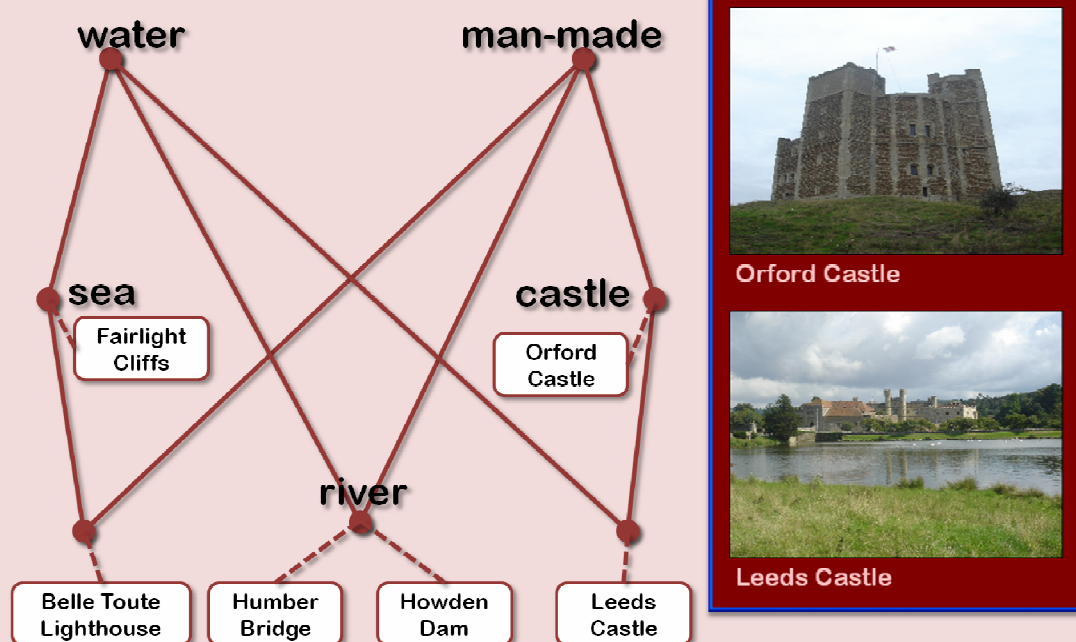


It is well known in IT that:
"For any particular problem, any one tool is an enormous aid to productivity.
But any two of them together will kill you."

Technology 1 – Business Intelligence



Technology 2 - Formal Concept Analysis

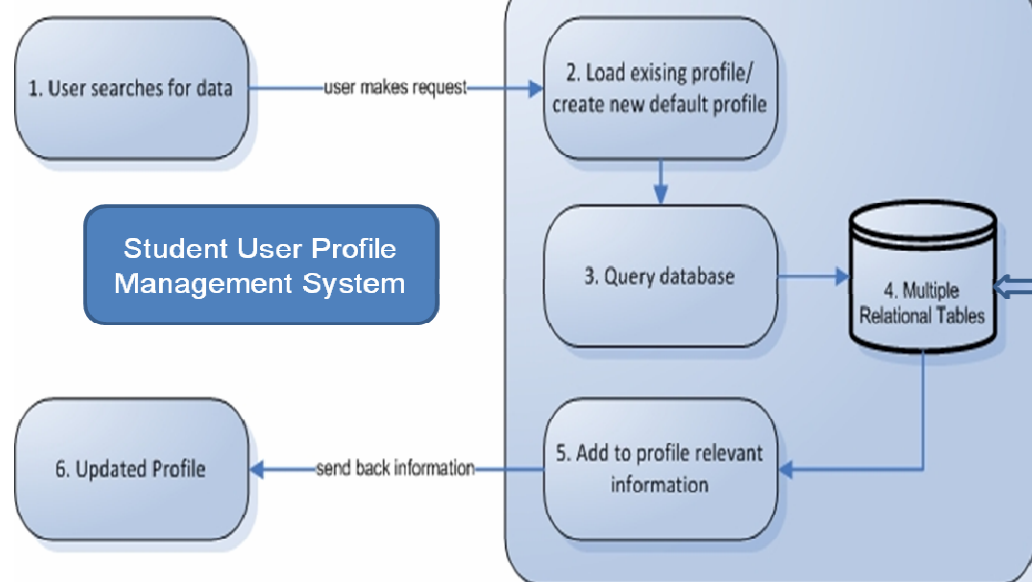


...with case-study based assessment...

...to enable students to decide 'what technology where'.

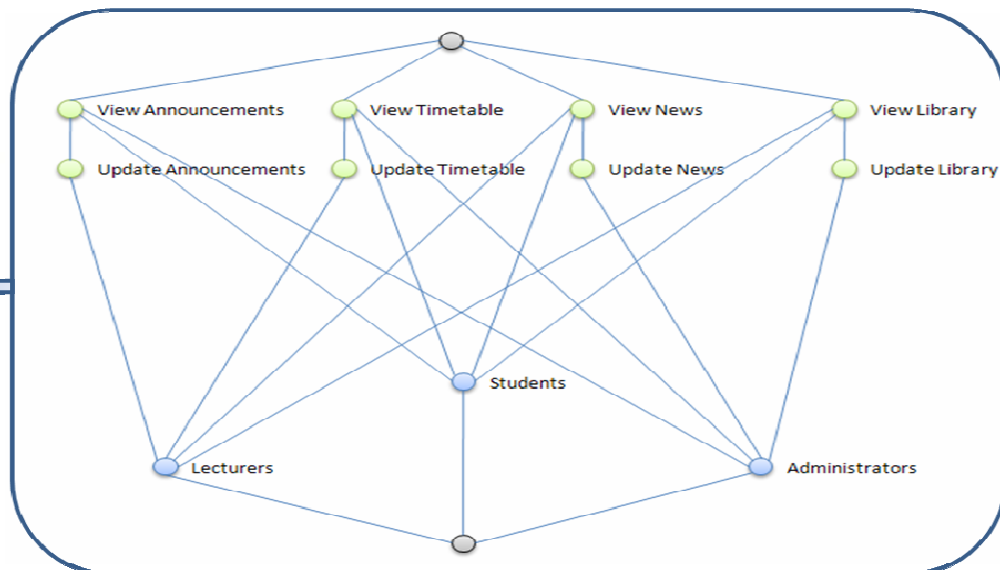
Technology 1: Business Intelligence

SW Group BI System



by Jason Matthews (student)

Technology 2: Formal Concept Analysis



by Chris James (student)